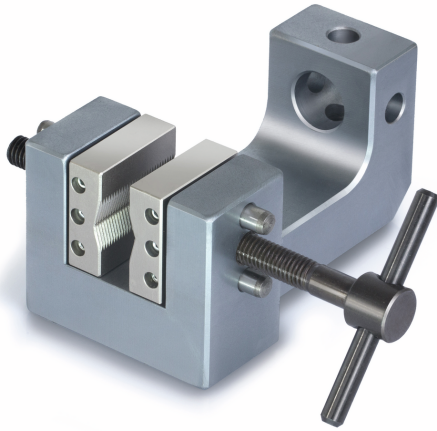


# KERN AD 9021



Screw Tension Clamp for tensile force tests



## Category

Brand	Sauter
Product category	Clamp
Product group	Screw tension clamp

## Construction

Dimensions completely mounted (W×D×H)	170×102×50 mm
Material	aluminium
Mounting - force dissipation	Threaded hole M6 External thread M12
Tensile/compressive force [Max]	1 kN
Maximum clamp width	30 mm
Clamping width	10 mm

## Environmental conditions

Storage temperature [Min]	-10 °C
Storage temperature [Max]	40 °C

## Packing & Shipping

Readability force [d] (N)	14 d
Dimensions packaging (W×D×H)	170×102×50 mm
Net weight	0,8 kg
Shipping method	Parcel service
Net weight approx.	0,80 kg
Gross weight approx.	0,80 kg
Shipping weight	0,8 kg

## Pictograms